

Item # K1000-5, K1000 - Anchor Nut Two-Lug, Fixed

THREAD: AS8879

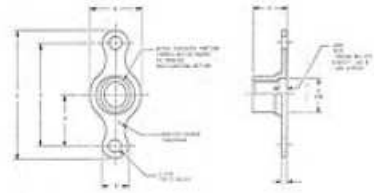
MATERIAL: Carbon or alloy steel, heat treated Rc. 49 max.

FINISH:

- K1000-(*) Cadmium plate per AMS-QQ-P-416, Type II, Class 2, plus Kaylube molybdenum disulfide dry film lubricant per AS5272.
- K1000X(*) Cadmium plate per AMS-QQ-P-416, Type II, Class 2.
- K1000-(*)CW Cadmium plate per AMS-QQ-P-416, Type II, Class 2, plus carbowax.

PERFORMANCE: NASM25027.

VARIATIONS: Add "BC" for bottom countersunk rivet holes. Example: K1000-4BC.



Specifications

Thread	0.3125-24 UNJF-3B
A ± .005	0.500
B - REF	0.265
C ± .002	1.000
D - MIN	0.317
H - MAX	0.328
K +.005 / -.000	0.130
L - MAX	1.292
V - REF	0.050
W - MAX	0.505
Approx. Weight (LBS/100)	0.680
Bottom countersunk rivet holes	No
Finish	Cadmium Plate per AMS-QQ-P-416, Type II, Class 2 plus Kaylube Molybdenum Disulfide Dry Lubricant Coat per AS5272
Thread Type	Unified
Configuration 1	Two Lug
Configuration 2	Fixed
Lock	Crimp Lock
Simplified Material	Alloy Steel
Strength	125KSI - 900Mpa
Temperature	450°F - 235°C
Thread	0.3125-24 UNJF-3B