

**Item # K1000-6, K1000 - Anchor Nut Two-Lug, Fixed**

**THREAD:** AS8879

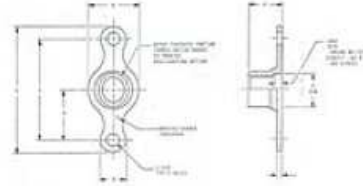
**MATERIAL:** Carbon or alloy steel, heat treated Rc. 49 max.

**FINISH:**

- K1000-(\*) Cadmium plate per AMS-QQ-P-416, Type II, Class 2, plus Kaylube molybdenum disulfide dry film lubricant per AS5272.
- K1000X(\*) Cadmium plate per AMS-QQ-P-416, Type II, Class 2.
- K1000-(\*)CW Cadmium plate per AMS-QQ-P-416, Type II, Class 2, plus carbowax.

**PERFORMANCE:** NASM25027.

**VARIATIONS:** Add "BC" for bottom countersunk rivet holes. Example: K1000-4BC.



**Specifications**

<b>Thread</b>	0.3750-24 UNJF-3B
<b>A ± .005</b>	0.500
<b>B - REF</b>	0.265
<b>C ± .002</b>	1.000
<b>D - MIN</b>	0.379
<b>H - MAX</b>	0.344
<b>K +.005 / -.000</b>	0.130
<b>L - MAX</b>	1.292
<b>V - REF</b>	0.055
<b>W - MAX</b>	0.614
<b>Approx. Weight (LBS/100)</b>	0.870
<b>Bottom countersunk rivet holes</b>	No
<b>Finish</b>	Cadmium Plate per AMS-QQ-P-416, Type II, Class 2 plus Kaylube Molybdenum Disulfide Dry Lubricant Coat per AS5272
<b>Thread Type</b>	Unified
<b>Configuration 1</b>	Two Lug
<b>Configuration 2</b>	Fixed
<b>Lock</b>	Crimp Lock
<b>Simplified Material</b>	Alloy Steel
<b>Strength</b>	125KSI - 900Mpa
<b>Temperature</b>	450°F - 235°C
<b>Thread</b>	0.3750-24 UNJF-3B